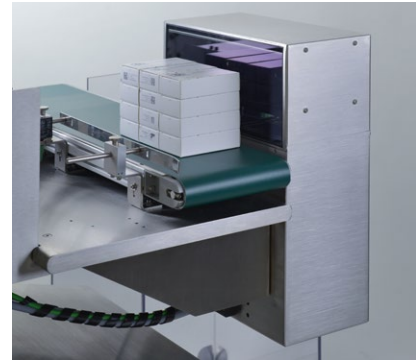


# TRACK & TRACE



- **Bundle and Folding Box Inspection**
- **Completeness check**
- **Different control positions possible**
- **Aggregation possible**
- **Serialisation possible through additional components**

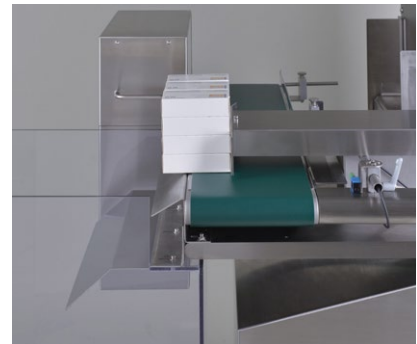


## CAPA Bundle (BI)

### Description

The systems of the **CAPA** series are designed for the packaging process for track & trace applications. The **CAPA Bundle Inspection** station inspects folding boxes that have been combined into a bundle. A control of single folding boxes is also possible. For the bundle inspection, area scan cameras of the **SIGNUM Codes** system are used to check 1D and 2D codes for readability and bundle completeness.

Aggregation and serialisation of the data can be implemented using the **IMPERA Management** system by scanware.



### Area of Application

#### Applicable Objects:

- Bundles
- Single folding boxes possible

#### Inspection Criteria:

- Readability of 1D and 2D codes  
e.g. Code 128 and DataMatrix
- Completeness of bundles

### Highlights

- Compact add-on solution for easy integration into existing systems
- Different control positions possible (top, front and back)
- Aggregation possible
- Modular, robust, mobile and ergonomic design
- Easy to clean stainless steel housing
- Brushless motors for wearless drives
- Serialisation possible through additional component
- High-quality norm components enable an efficient spare parts supply
- Common user interface, comprehensible menu navigation and convenient data entry
- High camera resolution for optimal results
- System manufacture to customer-specific requirements
- Precise bundle handling
- The **IMPERA Management** system provides for efficient data exchange

## ■ System

### Camera

Depending on the size of the composites to be inspected, cameras with up to 29 mega pixels are used, which are equipped with SMD W-LED lighting. The area scan camera can be installed by scanware in three different positions -top, front or back. For the "front" and "back" versions, the camera is installed in a DOM box. In the "top" version, the height of the camera is mechanically adjustable. This enables the size of the recording surface to be changed, which can be reduced or increased depending on the bundle size.

### Illumination

The illumination used in the **CAPA Bundle Inspection** is integrated in the housing of the **CAPA Bundle Inspection**. It is adjustable in 16 brightness levels. The illumination set for a format is stored in the format data set and is therefore reproducible.

### Construction

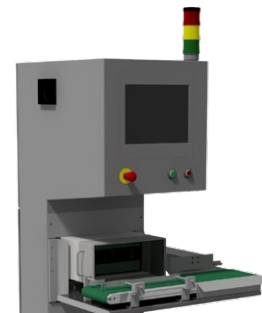
**CAPA Bundle Inspection** is equipped with a conveyor band (200 mm) to guide the bundles along the installed camera. A pneumatic ejection cylinder allows the bundle to be ejected when a fault is detected. A guide rail has been installed to guarantee that the bundles are guided in the correct position. This is also used for adjusting the format without tools (adjustable according to the bundle size).



Camera position top



Camera position front



Camera position back

## ■ Quality is visible.

- Modular build for a multitude of installation options
- Real-time operating system QNX® for security and speed
- Uniform graphical interface and easy-to-follow menu structure
- Fully 21 CFR Part 11 compliant
- Hard- and software are expandable and upgradable
- Wear-free, electronically controllable scanware W-LED illumination
- Easy to install on all common packaging machinery
- Communication with machine via a VDMA-XML protocol
- Simultaneous use of numerous inspection parameters
- Variety of statistical tools
- Development of special tasks and requirements on your request
- Availability of all parts guaranteed for 10 years
- Service offering solutions and support within 24 hours



Management



Packaging



Blister & Products



Codes, Text & Graphics



Track & Trace



Support



scanware



### scanware electronic GmbH

Darmstädter Straße 9-11  
D-64404 Bickenbach  
Telephone +49 6257 9352-0 Fax -22  
info@scanware.de  
www.scanware.de

### International Distributors:

Algeria | Brazil | Canada | China | Costa Rica | Egypt  
France | Greece | Italy | Morocco | Puerto Rico | Russia  
South Korea | Spain | Switzerland | Tunisia | United Kingdom | United States

