

This innovative solution is designed for labelling empty cosmetic tubes. The tube is fed either manually or automatically and is conveyed to the main carousel where a series of spindles receive the tube and convey it onto the various stations. Application of labels is controlled by both LABELX 140 ES and a product rotation system with possible automatic orientation of the label position in respect to the cap opening. The main frame is made in stainless steel with the balcony configuration and the control box position on the back side of the system and safety protection in polycarbonate. The labelling system is managed by a PLC with Touch Screen operator panel

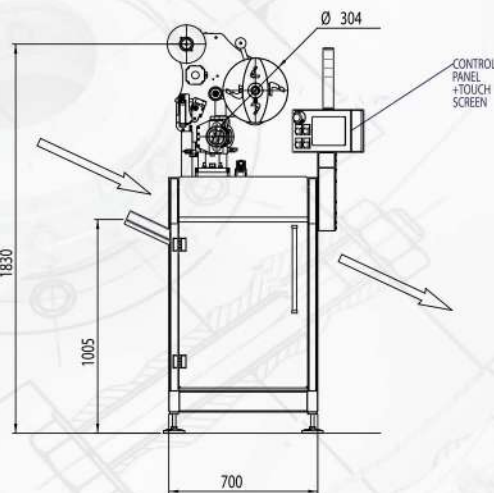
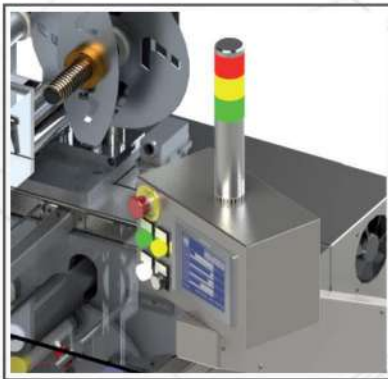
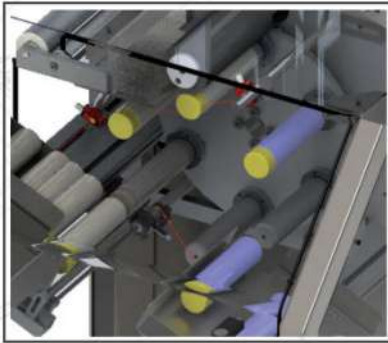
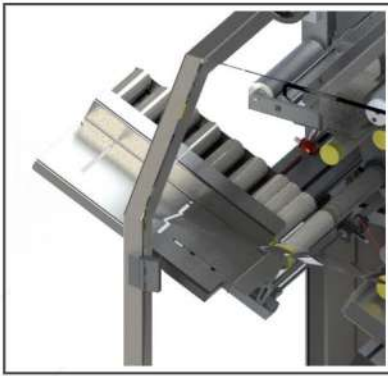


LABELLING MACHINE FOR COSMETIC TUBES

Social NET:    

Web-Site www.omastecnosistemi.com


OMAS
TECNOSISTEMI



Caratteristiche standard

- Etichettatrice LABELX 140 ES
- Gruppo regolazione micrometrica orizzontale e verticale con indicatori numerici di posizione
- Sistema di alimentazione tubi vuoti con carico manuale
- Modulo di trasporto a giostra con dime a 6 posizioni
- Dispositivo rotazione prodotto
- Sincronizzazione automatica delle velocità di distribuzione etichetta
- Struttura di sostegno serie MASTER
- Protezione totale in policarbonato trasparente
- Elettronica centralizzata con pannello operatore Touch Screen
- Unità PLC con memorizzazione dei parametri di funzionamento
- Velocità fino a 50 p/min (dipendente dalle dimensioni prodotto ed etichetta)

Technical features

- Labelling unit LABELX 140 ES
- Horizontal and vertical micro regulation unit with numeric indicators
- Semi-automatic product feeding device
- Conveying module with 6 position mechanical wheel
- Product rotating device
- Automatic speed synchronization
- MASTER main frame
- Total protections in transparent polycarbonate
- Centralized electronic control with Touch screen operator panel
- PLC unit with memory of setting parameters
- Speed up to 50 p/min (depending on product size and label)

Caracteristiques standard

- Etiqueteuse LABELX 140 ES
- Groupe indicateur micrométrique horizontal et vertical avec indicateurs numériques des positions
- Système semi-automatique pour l'alimentation des tubes
- Module de transport avec roue motorisée à 6 positions
- Synchronisation automatique de la vitesse
- Structure et châssis support série MASTER
- Protections totales en polycarbonate transparent
- Électronique centralisée avec panneau de contrôle opérateur à écran tactile
- Unité PLC avec mémorisation des paramètres de fonctionnement
- Vitesse jusqu'à 50 p/min (en fonction de les dimensions produits et de l'étiquette)

Equipamiento de serie

- Etiquetadora LABELX 140 ES
- Grupo de regulación micrométrica horizontal y vertical con indicador numérico de posición
- Alimentador semi-automático por tubos vacíos
- Módulo de transporte con rueda motorizada a 6 posiciones
- Sincronización automática de velocidades
- Estructura de soporte modelo MASTER
- Panel electrónico del operador centralizado con pantalla táctil
- PLC unidad con la memorización de los parámetros de funcionamiento
- Velocidad hasta 50 pág / min (dependiendo del tamaño del producto y de la etiqueta)